

2 Y axes in one chart / graph (Creating a chart with 2 different scales)

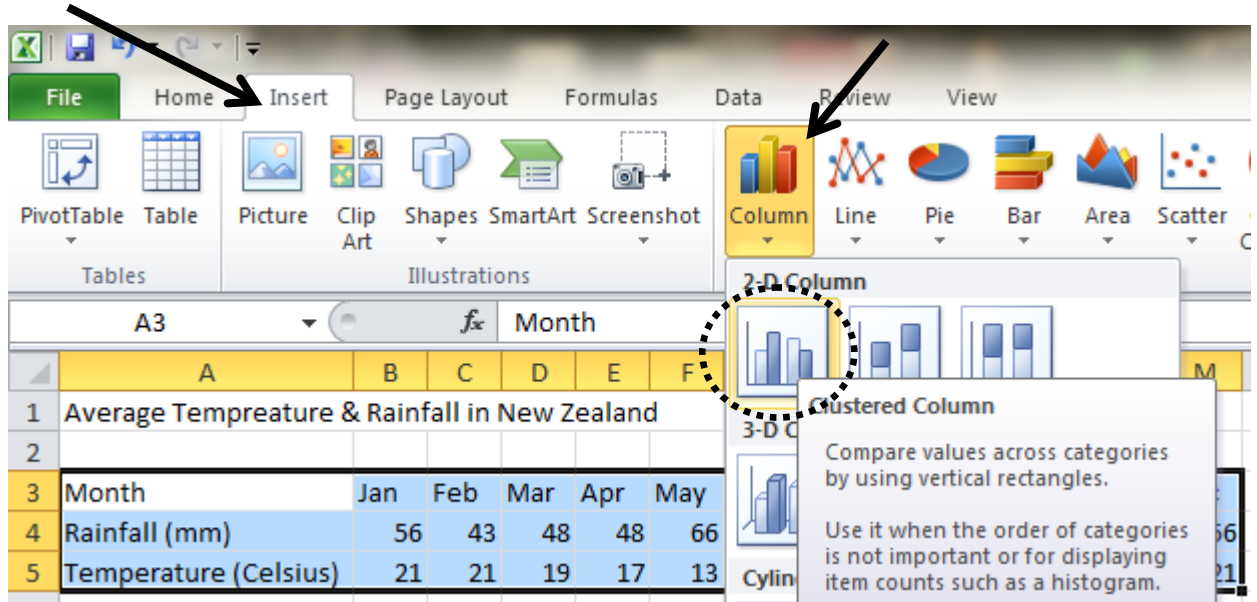
Microsoft Excel

You may wish to have two different measurements in one chart in order to compare or view them at the same time.

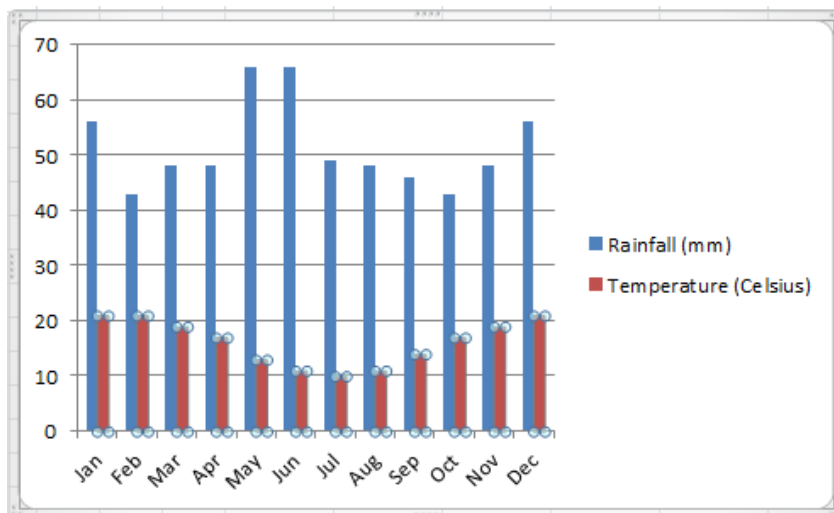
1. Highlight the table that you wish to create a chart from

	A	B	C	D	E	F	G	H	I	J	K	L	M
1	Average Temperature & Rainfall in New Zealand												
2													
3	Month	Jan	Feb	Mar	Apr	May	Jun	Jul	Aug	Sep	Oct	Nov	Dec
4	Rainfall (mm)	56	43	48	48	66	66	49	48	46	43	48	56
5	Temperature (Celsius)	21	21	19	17	13	11	10	11	14	17	19	21
6													

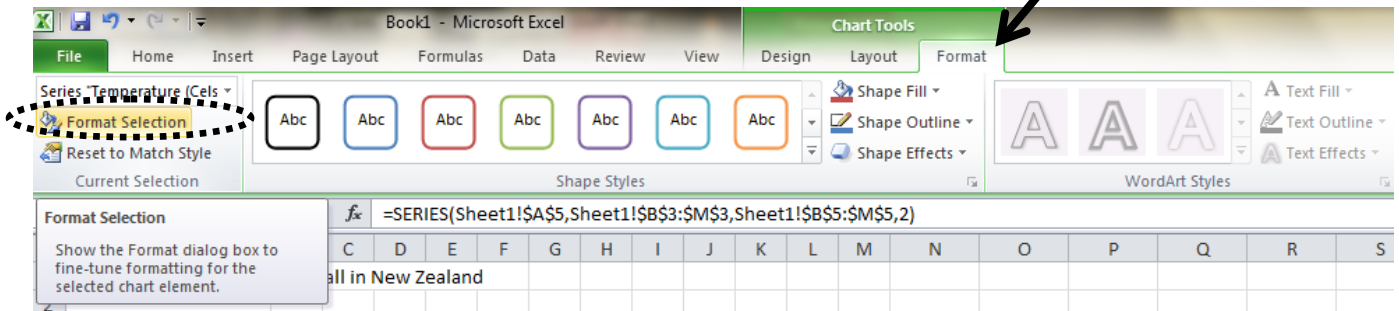
2. Click **Insert > Column > Clustered Column**



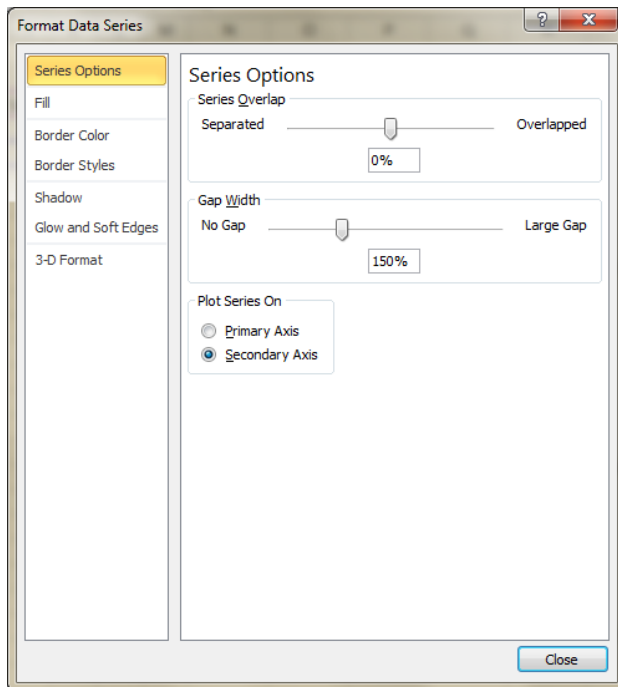
3. Select the series you want to display on a separate axes



4. Go to **Chart tools > Format > Format Selection**

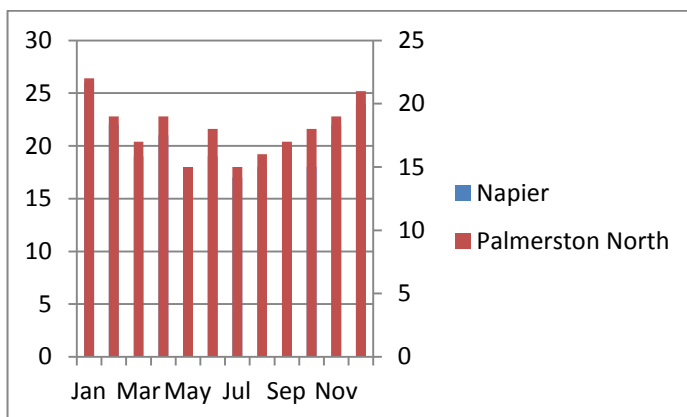


5. Select **Secondary Axis** under **Plot Series On**



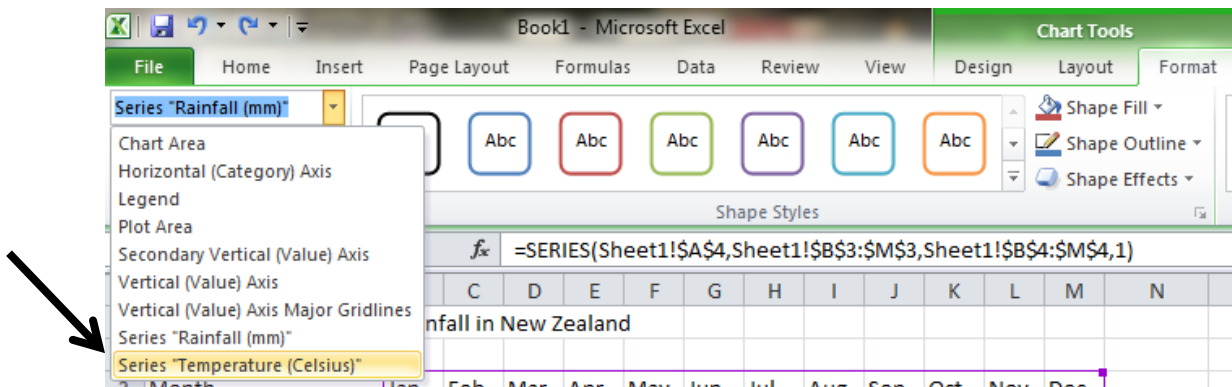
6. Click **Close**

7. Your chart should now look similar to this:

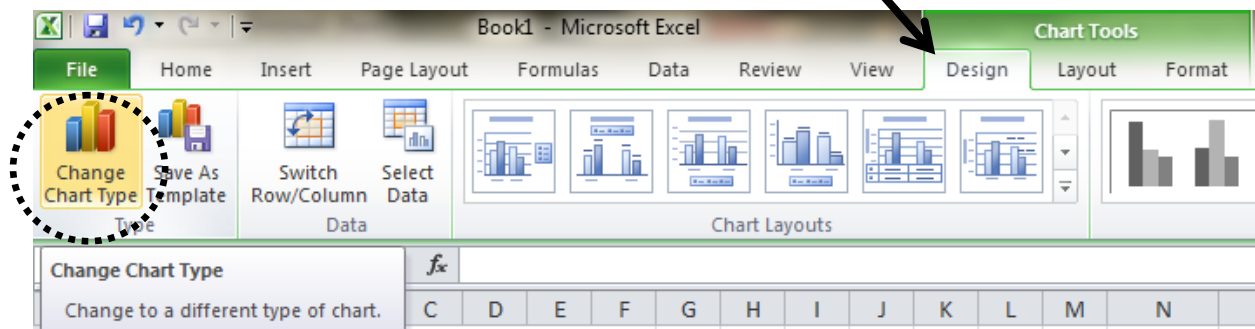


8. To change the type of chart used for a series, Select the series you want to change

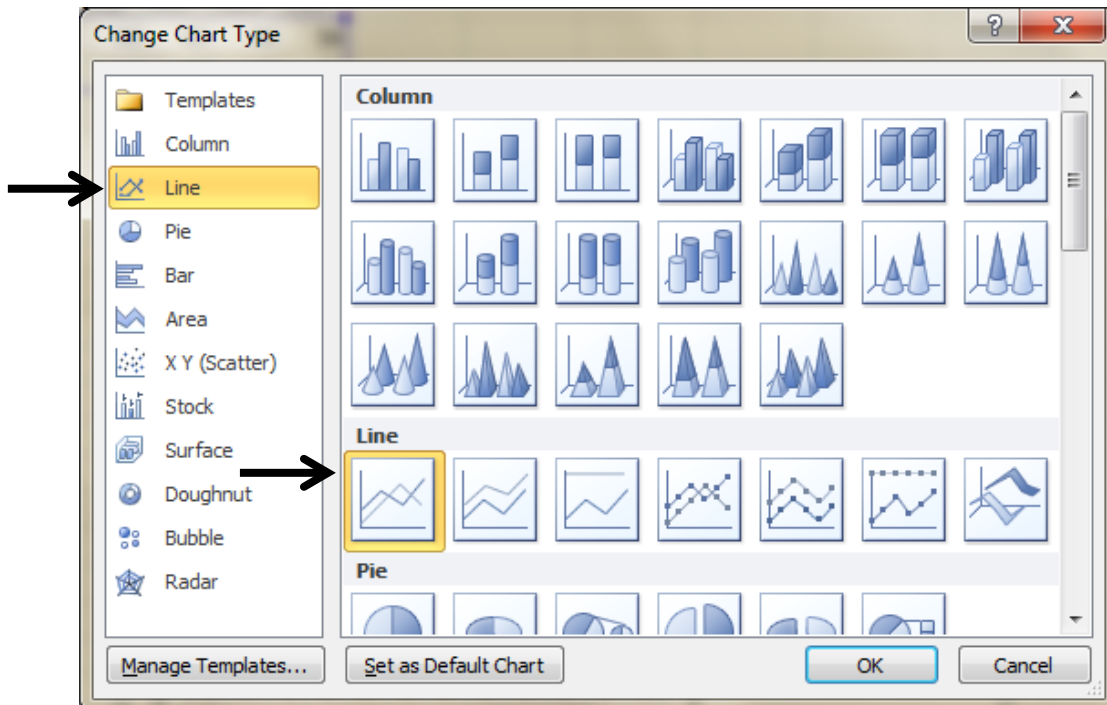
9. Select **Chart Tools > Format** and select the series you want to change from the drop down list



10. Go to **Chart tools > Design > Change Chart Type**



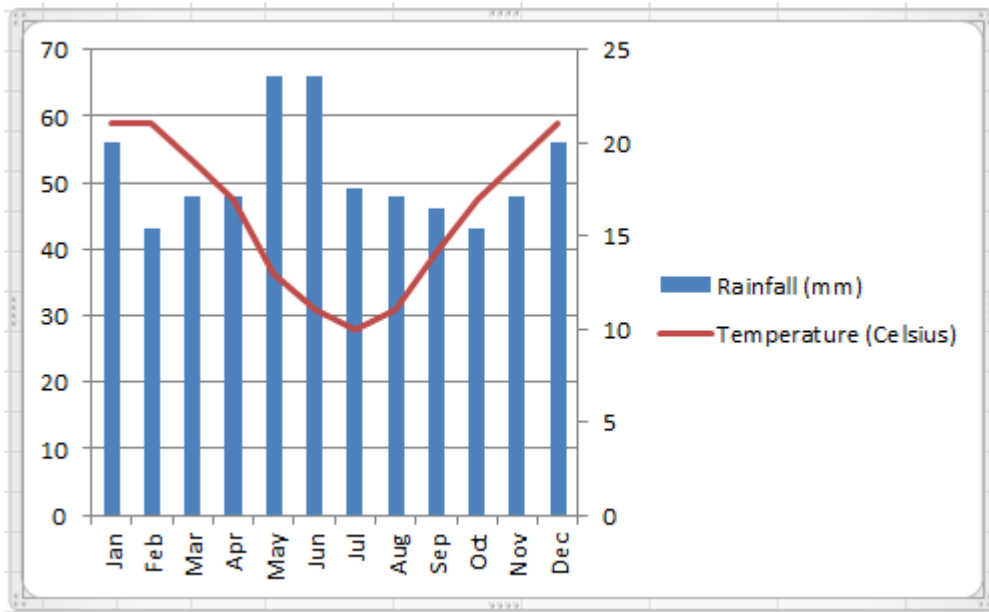
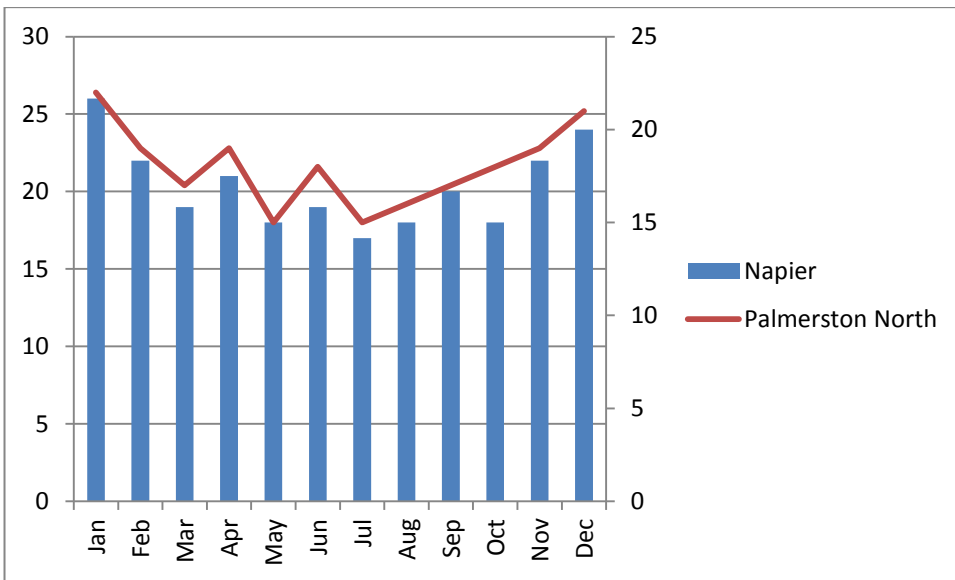
11. Select the appropriate chart type you wish to use for this series, click **OK**



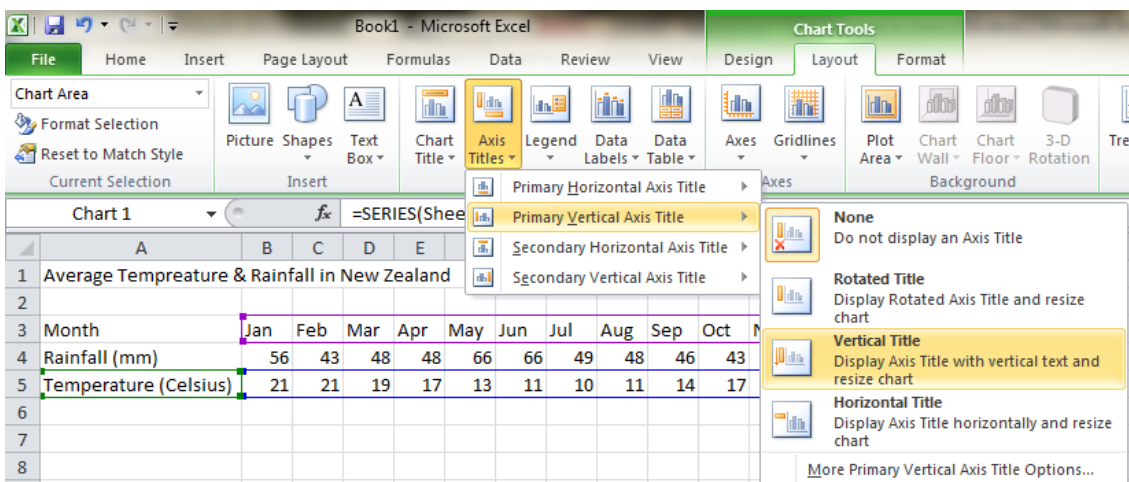
12. Click **OK**

13. To add axis titles, first select the chart (A light blue border will show around the chart)



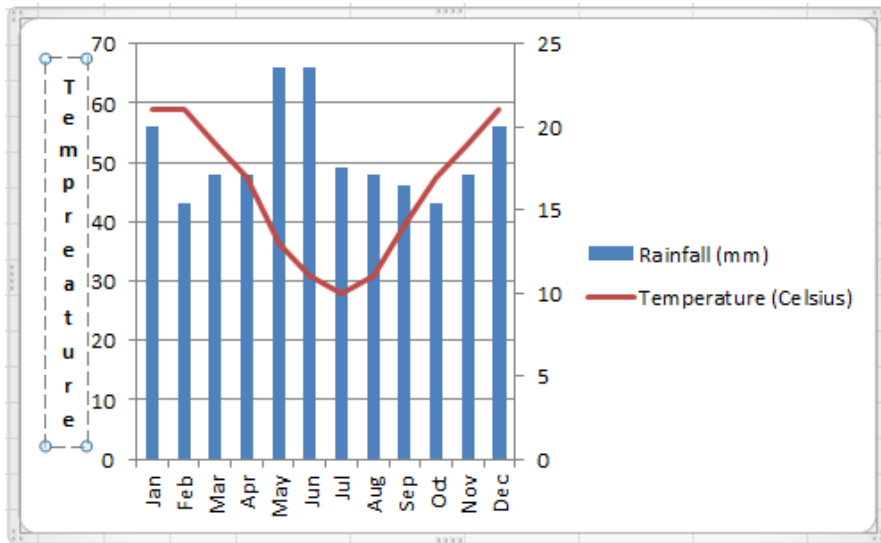


14. Then go to **Chart Tools > Layout > Axis Titles**, Then choose the appropriate Axis



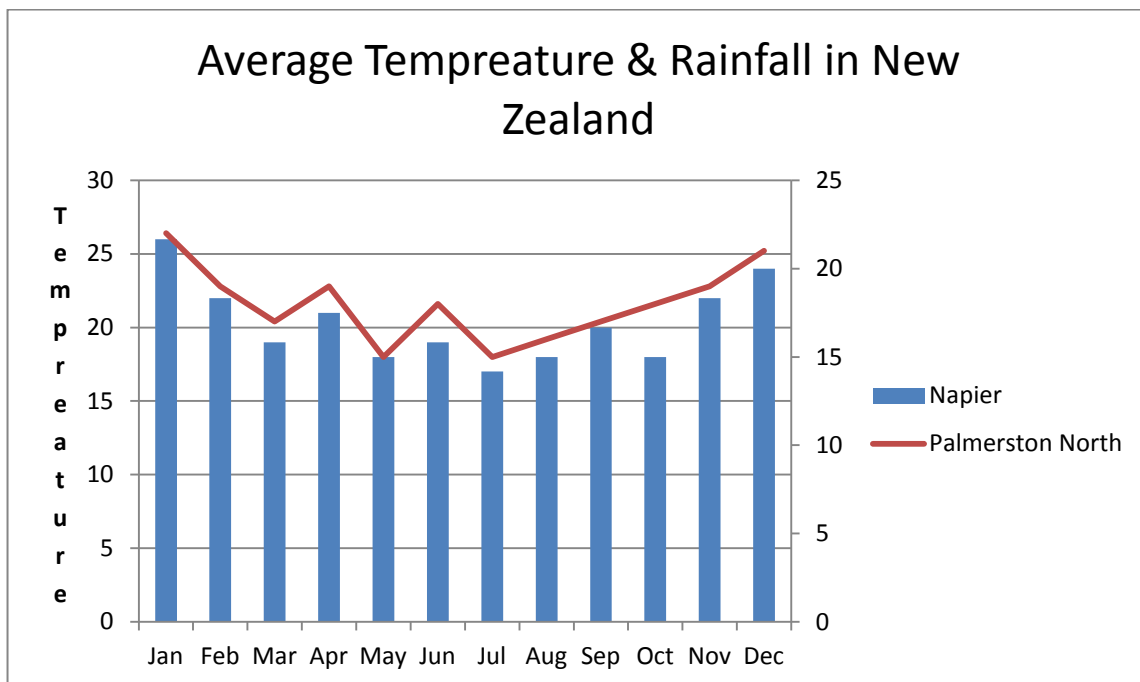
Month	Jan	Feb	Mar	Apr	May	Jun	Jul	Aug	Sep	Oct	Nov	Dec
Rainfall (mm)	56	43	48	48	66	66	49	48	46	43		
Temperature (Celsius)	21	21	19	17	13	11	10	11	14	17		

15. The title will appear on your chart



16. You can click in the text box and change the text as necessary

17. To add a title to your chart, select the chart, Go to **Chart Tools > Layout > Chart Title** and select the appropriate formatting for your title



18. Done!