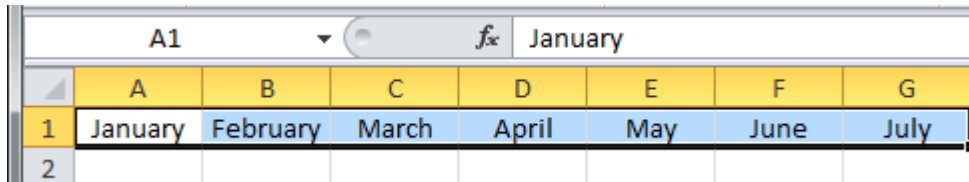


Text orientation in cells

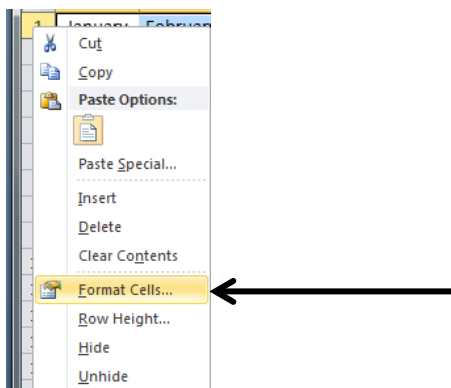
Microsoft Excel

You can change both vertical and horizontal alignment as well as the orientation of the text inside the cell.

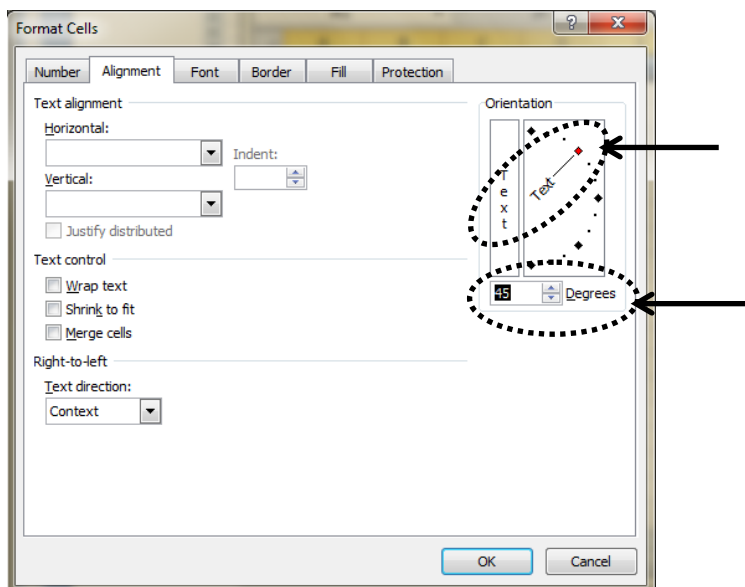
1. Select cells to be applied text orientation.



2. **RIGHT** click on the highlighted cells > **Format Cells**



3. Move text orientation bar with your mouse or manually type the degrees > Click **OK**



4. Done!

