

Viewing slides

Microsoft PowerPoint 2003

There are four different views. **View** > :

- **Normal**
- **Slide sorter**
- **Slide show**
- **Notes page**

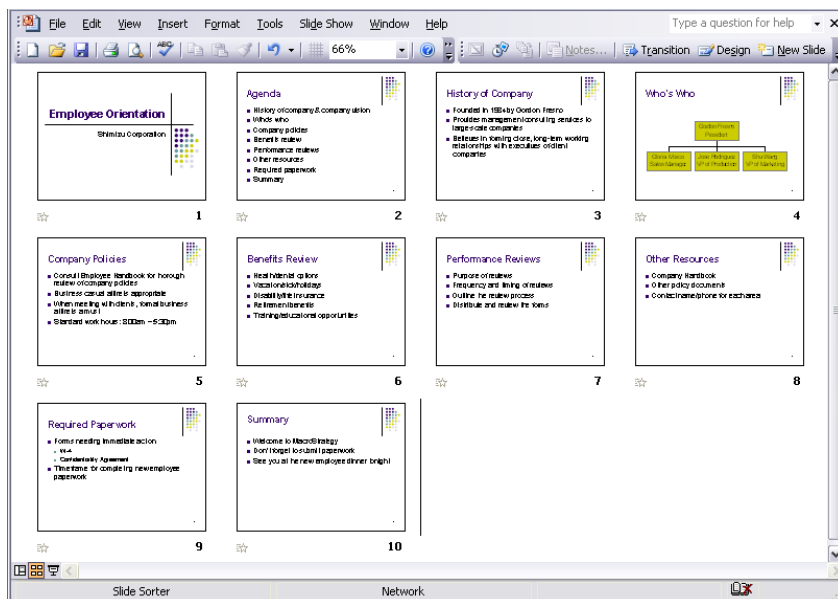
Normal view

This view would be good while designing your slide.



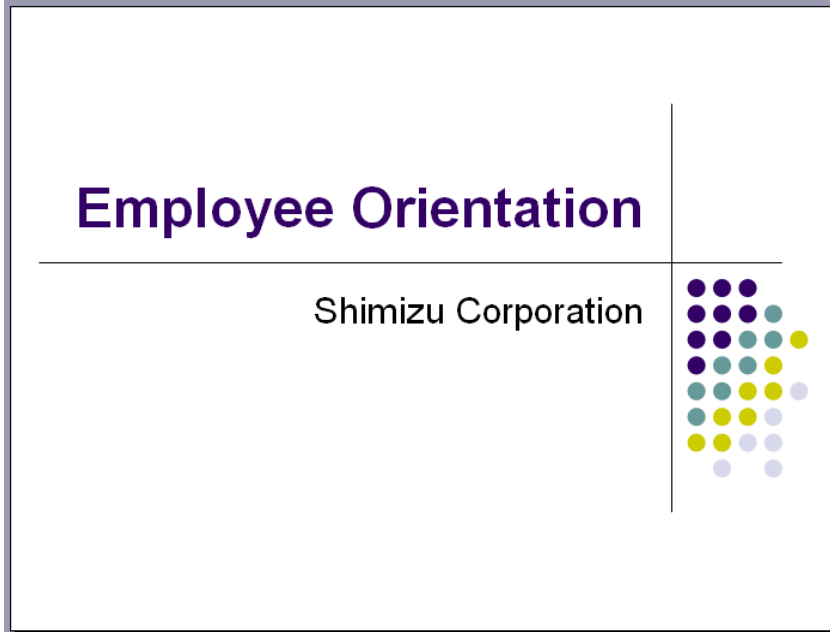
Slide sorter

When deleting, copying, pasting and moving your slides, this view would be easiest to manipulate your slides, also when you want to see an overview of all your slides.



Slide show

Slide show is what you use to present your slides. It will show in full screen. Click **ESC** key to return to the slide design mode. This is also used when you check your custom animations or at the final stage before your presentation.



Notes page

You can view your speaking notes on each slide.

