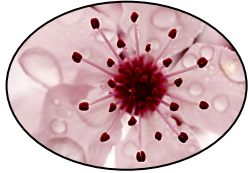


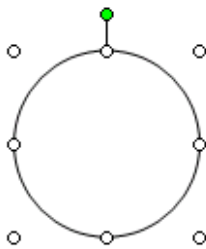
Inserting pictures into a shape

Microsoft Word 2003

How about this tip to make your shape or object prettier? You can insert a picture into a shape.



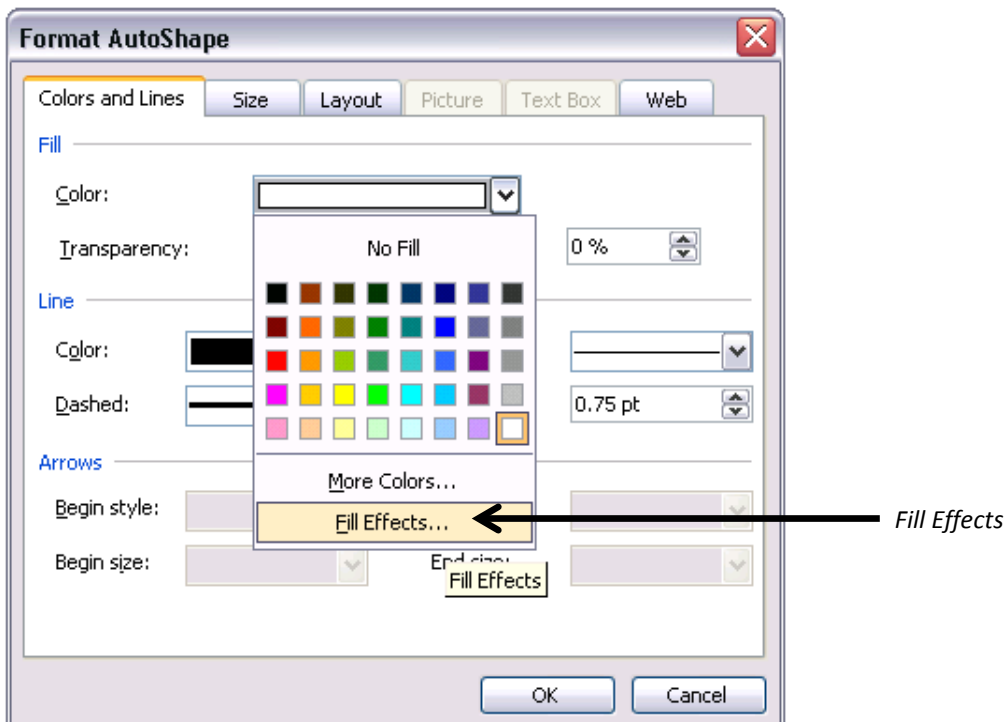
1. Insert a shape or object, e.g. a round shape



2. Perform one of the following:

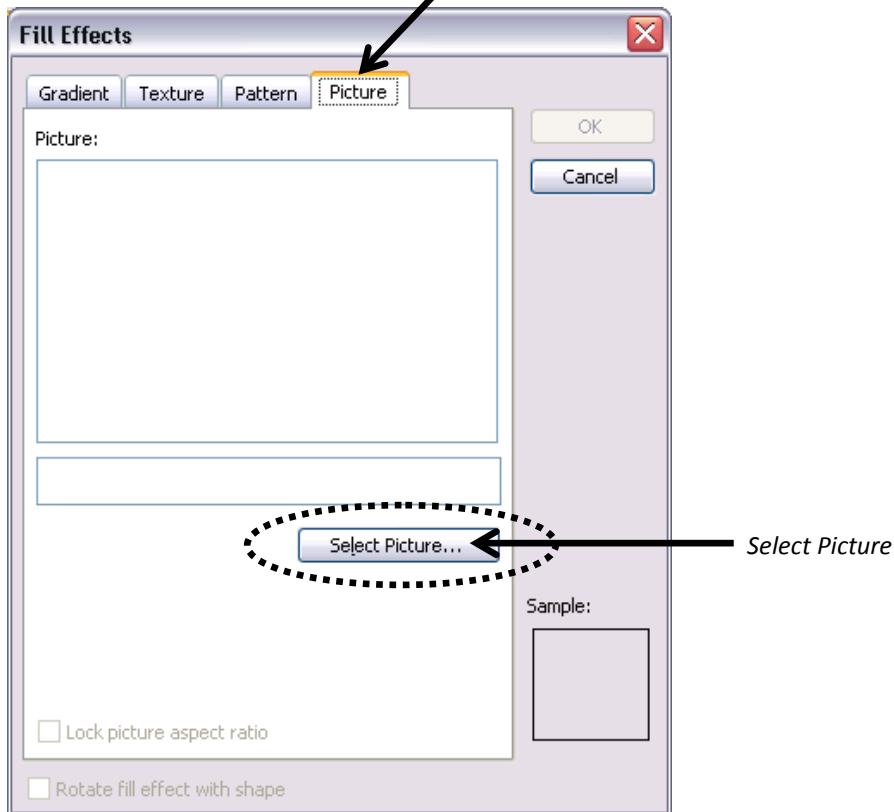
- Double click **on** the shape (the centre part is the easiest)
- **Right click** on the shape > select **Format AutoShape**
- **Format > AutoShape**

3. Click the drop box next to Fill Colour option > **Fill Effects**

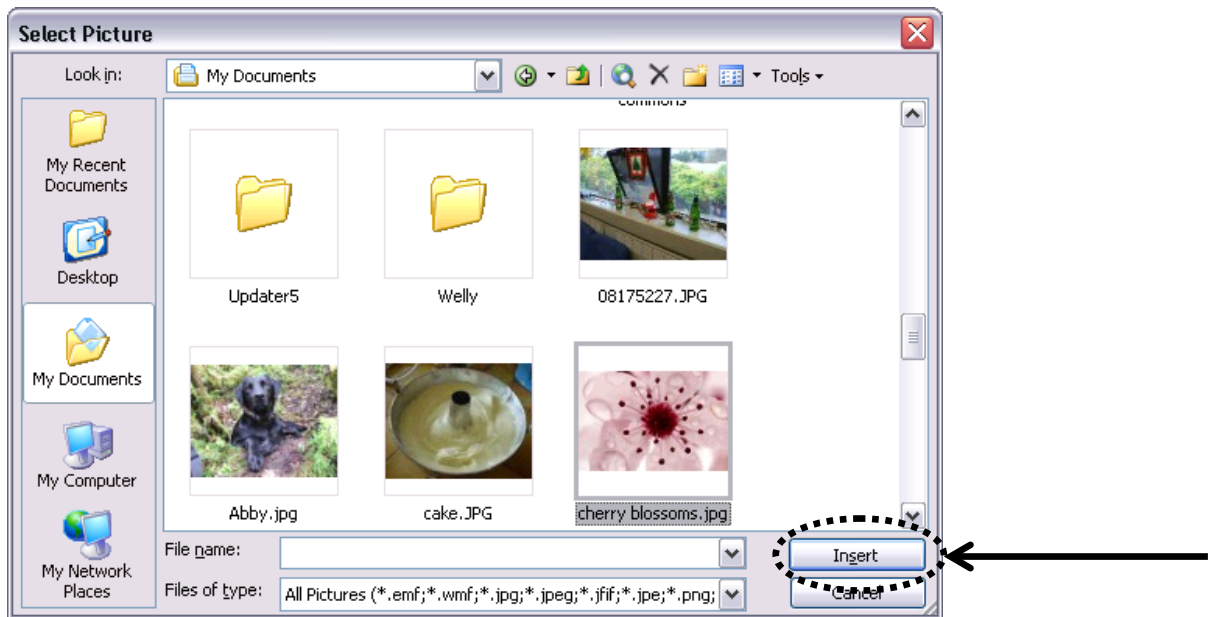




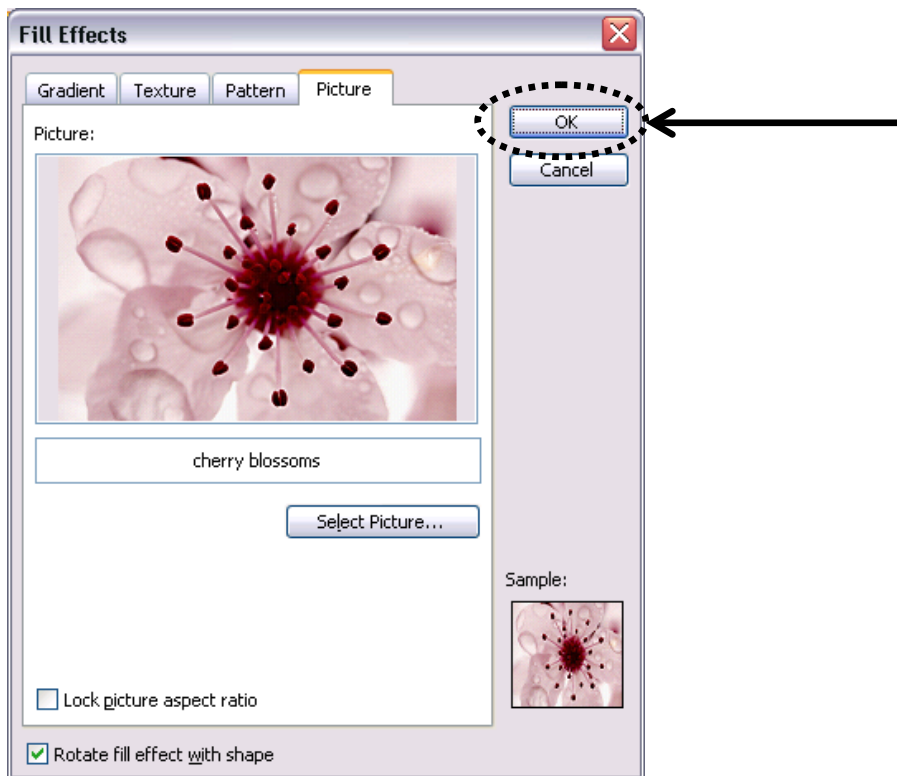
4. Click the **Select Picture** button in the **Picture** tab



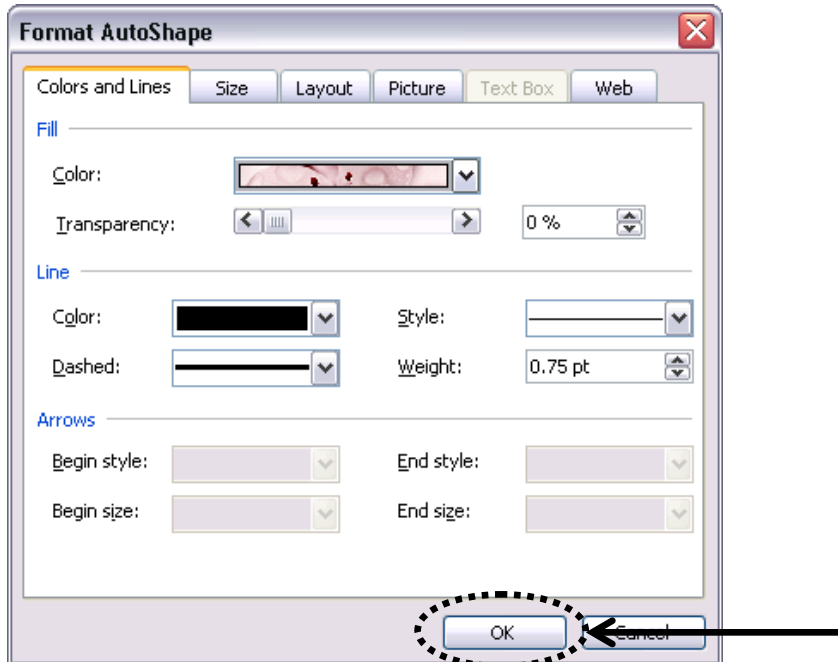
5. Browse the picture file > Click the **Insert** button



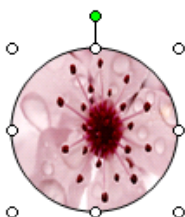
6. (Tick on **Lock picture aspect ratio** is optional. See next page tip) > Click the **OK** button



7. Click the **OK** button

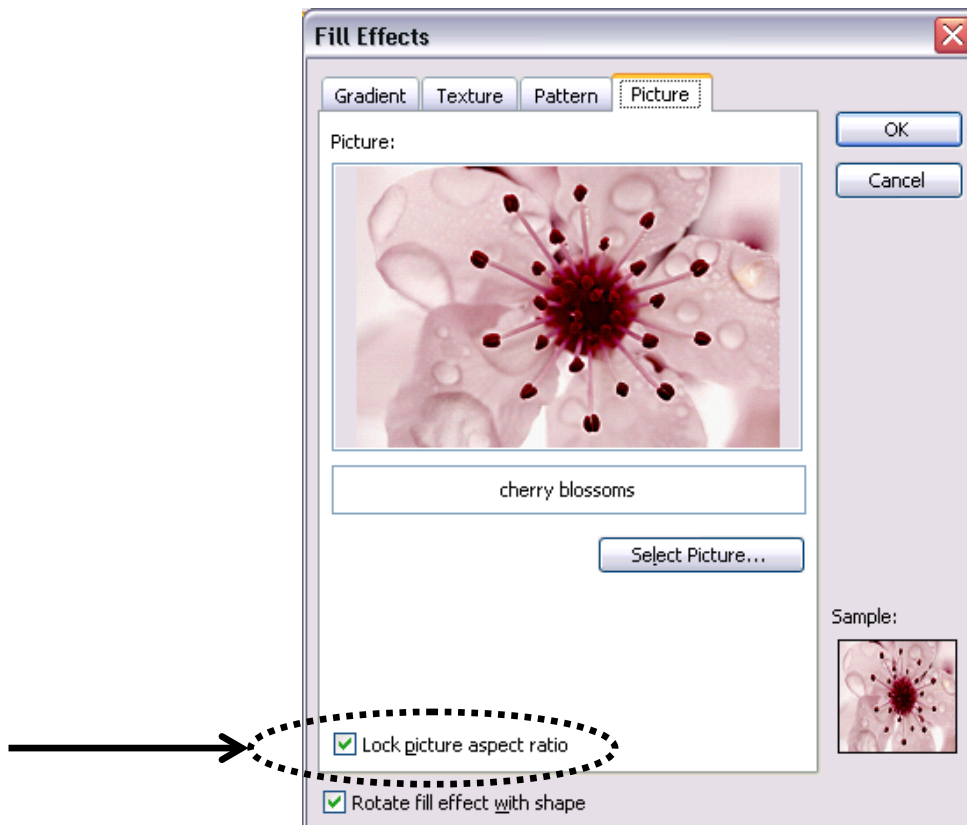


8. Done



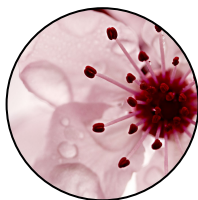
Tip: *Lock picture aspect ratio*

At step 6 on the previous page, tick the **Lock picture aspect ratio** at the bottom of the **Picture** tab.



This option keeps the original image ratio. See samples below.

Lock picture aspect ratio **ON**



Lock picture aspect ratio **OFF**

